

Events from the College of Music & Dramatic Arts
Spring 2025 Season



LSU

College of Music
& Dramatic Arts



Welcome to the Spring 2025 edition of Prologue!

Inside this booklet, you will discover a showcase of some of the most thrilling fine arts events Baton Rouge has to offer. From the inspiring, soul-stirring melodies of the School of Music to the groundbreaking and dynamic creativity of the School of Theatre, our college serves as a hub for the performing arts, providing a truly unparalleled performing arts experience with something to captivate every audience. We invite you to enjoy a diverse array of experiences, featuring award-winning productions from the Turner-Fischer Center for Opera and the renowned Swine Palace equity theatre.

The performing arts serve as a vibrant space where beauty and inspiration converge to create the magic of live performance. Under the mentorship of our world-class faculty, students consistently deliver compelling performances, growing into 21st-century artists ready to fulfill their dreams and sustain the vitality of performing arts for generations to come.

On behalf of everyone at LSU, thank you for being a valued patron and friend of the performing arts. The dedication and passion our students and faculty devote to each production and performance are made even more meaningful by your support. We are honored to continue our contribution to the cultural landscape of Louisiana and the world, and I look forward to welcoming you to our events in the months ahead.

With Warmest Regards,

A handwritten signature in black ink, appearing to read "E. Lau". The signature is fluid and cursive, written in a professional style.

Eric Lau, DMA
Dean, LSU College of Music & Dramatic Arts



Swine Palace Presents:

Red Velvet

Feb. 6–16, 2025 // Shaver Theatre

Theatre Royal, Covent Garden, 1833. Edmund Kean, the greatest actor of his generation, has collapsed on stage while playing Othello. A young black American actor has been asked to take over the role, but as the public riots in the streets over the abolition of slavery, how will the cast, critics, and audience react to the revolution taking place in the theatre?

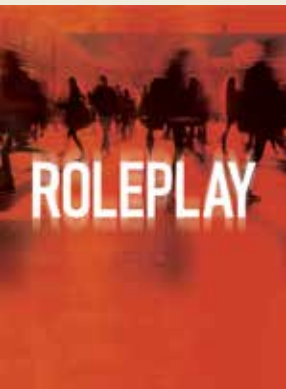


LSU School of Music Presents:

Jazz Showcase Featuring Adam Larson

Feb. 20, 2025 // 7:30 p.m. // LSU Union Theater

Feel the energy and excitement of America's original art form at the LSU Jazz Showcase! This dynamic event features the LSU Jazz Ensemble, Jazz Lab Band, Chamber Groups, and more, performing in rapid succession with a fresh, spontaneous repertoire. This spring, we're thrilled to welcome guest artist Adam Larson, a renowned saxophonist praised for his technical brilliance and innovative compositions. Don't miss this vibrant celebration of jazz creativity and excellence!



LSU School of Theatre Presents:

Roleplay

Mar. 13–23, 2025 // Reilly Theatre

Written by Tulane University students, led by a team of professional artists, *Roleplay* depicts several college students who navigate the university system, sexual assault, party culture, and social pressures. *Roleplay* is transcribed directly from the improvisations of actual college students.



Turner-Fischer Center for Opera Presents:

Candide

Mar. 21 & 23, 2025 // Shaver Theatre

Join us for the "Best of All Possible Worlds," as the Turner-Fischer Center for Opera presents composer Leonard Bernstein and Co.'s legendary and entertaining *Candide*! Starting with its delightful overture, this celebrated comedic operetta, based on Voltaire's satire, takes its audiences on a journey of innocence, optimism, and the unexpected lessons of life, all set to some of the most popular music and colorful lyrics yet written for the American stage!



**Recital of New Music:
Composition & EMDM Faculty**
Jan. 25, 2025 // 7:30 p.m.
School of Music Recital Hall

Discover the artistry and innovation of the Composition and EMDM programs in this inspiring performance from LSU's talented faculty composers. The program will feature new works by Jesse Allison, Stephen David Beck, Mara Gibson, Brian Nabors, and Christopher Trapani.



From the Bayou to Broadway
Mar. 20, 2025 // 3:30 p.m.
School of Music Recital Hall

LSU alumni DeAundre' Woods (*MJ: The Musical*) and Prentiss Mouton (*Parade*) return to LSU to perform iconic Broadway numbers in a special recital, followed by a Q&A session highlighting their journey from LSU to Broadway.



LSU Wind Ensemble
Feb. 25, 2025 // 7:30 p.m.
LSU Union Theater

The LSU Wind Ensemble presents *Allusions*, featuring works inspired by people, places, and events. Highlights include world premieres, guest performances, and Karel Husa's *Music for Prague, 1968*. Join this unforgettable musical journey!



Irrera Brothers Guest Recital
Mar. 26, 2025 // 7:30 p.m.
School of Music Recital Hall

John and Joe Irrera, twin brothers and Eastman School of Music alumni, bring their captivating violin and piano recital to Baton Rouge. Don't miss a special surprise performance featuring Lin He, LSU Associate Professor of Violin.



Jared Hauser & Willis Delony
Feb. 26, 2025 // 7:30 p.m.
School of Music Recital Hall

Guest artist Jared Hauser, Vanderbilt's Professor of Oboe, joins LSU Boyd Professor Willis Delony for an evening of oboe and piano. Highlights include Howard Levy's jazz-inspired *Sonata for Oboe and Piano* and a new work by LSU composer Brian Nabors.



Baylor Piano Trio Guest Recital
Apr. 7, 2025 // 7:30 p.m.
School of Music Recital Hall

The Baylor Piano Trio—Eka Gogichashvili (violin), Philip Borter (cello), and Kae Hosoda-Ayer (piano)—performs Brahms's *Piano Trio No. 1 in B Major*, Shostakovich's *Piano Trio No. 1*, and Kanchelli's *Instead of a Tango*.



LSU Big Bands with Ryan Middagh
Apr. 10, 2025 // 7:30 p.m.
LSU Union Theater

Enjoy an electrifying spring concert with the LSU Jazz Ensemble, LSU Jazz Lab Band, and guest saxophonist Ryan Middagh, Director of Jazz Studies at Vanderbilt University, under the direction of Doug Stone and John Madere.



LSU Festival of Choirs
May 2, 2025 // 7:30 p.m.
LSU Union Theater

The LSU A Cappella Choir, Chorale, Gospel Choir, and Tiger Glee Club present Jocelyn Hagen's *The Notebooks of Leonardo da Vinci*, a groundbreaking multimedia concert blending SATB choir, orchestra, and video projections to bring da Vinci's words and drawings to life.



SciArts Play Festival
Apr. 13-15, 2025
Studio Theatre

The School of Theatre and the Department of Biological Sciences present the 2nd SciArts New Play Festival. SciArts uses theatre to explore our interactions with the world of science. Three new plays out of 150 submissions will receive staged readings.



2025 Dance & Physical Theatre Showcase
May 2 & 4, 2025 // 7:30 p.m.
Shaver Theatre

A tradition that merges the beauty of the School of Theatre's annual Dance Concert with the thrill of high-flying Physical Theatre. LSU students will tell stories through movement—part dance, part aerial silk work.



LSU Symphony Orchestra Concert
Apr. 25, 2025 // 7:30 p.m.
LSU Union Theater

The LSU Symphony Orchestra closes its season with student artistry, featuring Nathan Anderson as the Dean's Concerto Competition winner, Ruth Gipps' lyrical *Song for Orchestra*, and Dvořák's vibrant Symphony No. 8, a joyous tribute to his Czech heritage.



2025 Take Film Festival
May 3, 2025 // 7:00 p.m.
Shaver Theatre

The Annual Take Film Festival is a celebration of undergraduate, graduate students, and alumni from LSU and universities all over Louisiana. Three guest judges from various parts of the film industry judge short films for the most anticipated night of film.



LSU Geaux Film

Offering comprehensive training from the undergraduate to graduate level, the **School of Theatre** is home to a community of artists, educators, and scholars, dedicated to the creation, cultivation, and understanding of the dramatic narrative arts. From passionate actors, dancers, and filmmakers to innovative designers, directors and technicians we feature the work of our students through a diverse array of productions annually, ranging from classic to contemporary work.

A hallmark of the School is Swine Palace, the School's affiliated professional theatre company, which provides students, faculty, and staff the opportunity to work alongside professionals in all areas.

Red Velvet

Feb. 6–16, 2025 // Shaver Theatre

Theatre Royal, Covent Garden, 1833. Edmund Kean, the greatest actor of his generation, has collapsed on stage while playing Othello. A young black American actor has been asked to take over the role, but as the public riots in the streets over the abolition of slavery, how will the cast, critics, and audience react to the revolution taking place in the theatre?

Roleplay

Mar. 13–23, 2025 // Reilly Theatre

Written by Tulane University students, led by a team of professional artists, *Roleplay* depicts several college students who navigate the university system, sexual assault, party culture, and social pressures. *Roleplay* is transcribed directly from the improvisations of actual college students.

The **LSU Orchestral Studies** area provides a robust, fulfilling musical experience for all interested stakeholders at LSU. Audiences enjoy exciting and creative programming and concerts, while students collaborate with artists, composers, and LSU's world-renowned faculty. Orchestral ensemble opportunities are open to music majors and non-majors who seek study and participation in ensemble performance through a wide range of repertoire. It serves as a valuable resource to the greater orchestral and educational community of Louisiana.

The Orchestral Studies area regularly hosts guest artists at LSU, such as GRAMMY-winning trio Time For Three. These visits further enhance our students' experience with masterclasses, joint rehearsals and concerts, and community outreach events.

LSU Symphony Orchestra

Feb. 5, 2025 // 7:30 p.m.
LSU Union Theater

LSU Chamber Symphony Concert

Mar. 20, 2025 // 7:30 p.m.
School of Music Recital Hall

LSU Concert Orchestra

Apr. 21, 2025 // 7:30 p.m.
School of Music Recital Hall

LSU Symphony Orchestra Concert

Apr. 25, 2025 // 7:30 p.m.
LSU Union Theater





LSU Jazz Showcase featuring the Jazz Ensemble

LSU's **Jazz Studies** area boasts a rich history that can be traced back to the 1950s. Legendary jazz alumni, such as trombonist Carl Fontana and composer/pianist Les Hooper, have made significant contributions to America's great art form. The current generation of alumni includes saxophonist Brad Walker, active touring artist and top call player in New Orleans, and pianist Oscar Rossignoli, widely recognized as a rising star in New Orleans and beyond.

The LSU Jazz Ensemble frequently hosts exhilarating big band concerts featuring world-renowned jazz artists. Recent guests have included trumpet luminary Wayne Bergeron, saxophonist and Louisiana native Branford Marsalis, and jazz fusion drummer Peter Erskine.

LSU Jazz Showcase Featuring Adam Larson

Feb. 20, 2025 // 7:30 p.m.
LSU Union Theater

LSU Big Bands with Ryan Middagh

Apr. 10, 2025 // 7:30 p.m.
LSU Union Theater

LSU Chamber Jazz Ensemble Concert

Apr. 15, 2025 // 7:30 p.m.
School of Music Recital Hall

LSU's **Composition** and **Experimental Music & Digital Media (EMDM)** areas push the boundaries of creativity and foster scholarship across the spectrum of music making. Students have opportunities to hear their music performed by a wide range of LSU ensembles and media, and even participate themselves in the Constantinides New Music Ensemble and the Laptop Orchestra of Louisiana.

The Constantinides New Music Ensemble, named for the late LSU Boyd Professor Dinos Constantinides, explores collaborative performances with other art forms while trailblazing new methods of community engagement through non-traditional venues. Recently, the ensemble journeyed to New York City for a performance of new music and LSU student compositions at Carnegie Hall.

Recital of New Music

Composition & EMDM Faculty
Jan. 25, 2025 // 7:30 p.m.
 School of Music Recital Hall

LSU High Voltage

Adventurous Electric Guitar
Mar. 7, 2025 // 7:30 p.m.
 Digital Media Center Theatre

LSU Constantinides New Music Ensemble (CNME) Concert

Apr. 8, 2025 // 7:30 p.m.
 School of Music Recital Hall

Undergraduate Composition Recital

Apr. 14, 2025 // 5:30 p.m.
 School of Music Recital Hall

Really, Really New Music Marathon

Apr. 28, 2025 // 3:00 p.m.
 School of Music Recital Hall





LSU Candlelight Concert featuring the Gospel Choir

The **LSU Choral Studies** area offers a variety of choral ensembles for students, each with an individual character and mission. Chorus members represent a cross-section of the LSU student population, including undergraduate and graduate students, who perform literature ranging from dramatic cantatas to gospel spirituals and folksongs.

The LSU A Cappella Choir regularly performs bus tours in Louisiana and eastern Texas, continuing a School of Music tradition dating back to the 1930s. During their most recent trip in January 2023, the choir performed for over 2500 high school students and community members across seven stops.

LSU Chamber Singers Concert

Feb. 11, 2025 // 7:30 p.m.

Trinity Episcopal

LSU A Cappella Choir Concert

Feb. 27, 2025 // 7:30 p.m.

University United Methodist Church

LSU Chorale & Tiger Glee Club

Mar. 14, 2025 // 7:30 p.m.

University United Methodist Church

LSU Chamber Singers Concert

Mar. 25, 2025 // 7:30 p.m.

Trinity Episcopal

LSU Gospel Choir Concert

Apr. 24, 2025 // 7:30 p.m.

School of Music Recital Hall

LSU Chamber Singers Concert

Apr. 29, 2025 // 7:30 p.m.

University Presbyterian

LSU Festival of Choirs

May 2, 2025 // 7:30 p.m.

LSU Union Theater

The **LSU Department of Bands** is a storied component of our School of Music, originating with the military traditions of the “Old War Skule” over a century ago. The department encompasses three distinct concert ensembles, plus the award-winning Tiger Marching Band, and hosts a wide array of performances, outreach events, and camps.

The LSU Symphonic Winds was chosen as one of the seven collegiate ensembles to perform at the College Band Directors National Association (CBDNA) Southern Division Conference, hosted at the University of Memphis in February 2024.

LSU Wind Ensemble Concert

Feb. 25, 2025 // 7:30 p.m.
LSU Union Theater

LSU Symphonic Winds Concert

Mar. 6, 2025 // 7:30 p.m.
LSU Union Theater

LSU Symphonic Band Concert

Mar. 11, 2025 // 7:30 p.m.
LSU Union Theater

LSU Wind Ensemble & Chamber Winds Concert

Mar. 13, 2025 // 7:30 p.m.
School of Music Recital Hall

LSU Symphonic Band Concert

Apr. 22, 2025 // 7:30 p.m.
LSU Union Theater

LSU Symphonic Winds Concert

Apr. 23, 2025 // 7:30 p.m.
LSU Union Theater

LSU Wind Ensemble Concert

Apr. 29, 2025 // 7:30 p.m.
LSU Union Theater



Turner-Fischer Center for Opera presents *Carousel*

The **Turner-Fischer Center for Opera at LSU** offers a comprehensive training program for aspiring opera students, who work with dynamic and accomplished faculty. The Center produces multiple full-scale productions each year, collaborating with the LSU Orchestral Studies area and LSU School of Theatre. Alumni can be seen performing on the world's greatest opera stages, including the Metropolitan Opera, La Scala, Covent Garden, Houston Grand Opera, San Francisco Opera, and more.

Productions at the Turner-Fischer Center are consistently recognized at high levels for their musical excellence and artistic direction, with recent shows such as Orson Rehearsed, Orpheé, and Cosí fan tutte winning accolades from the National Opera Association and The American Prize.

Candide

Mar. 21 & 23, 2025 // Shaver Theatre

Join us as we seek the “Best of All Possible Worlds,” as the Turner-Fischer Center for Opera presents composer Leonard Bernstein and Co.’s legendary and entertaining *Candide*! Starting with its delightful overture, this celebrated comedic operetta, based on Voltaire’s satire, takes its audiences on a journey of innocence, optimism, and the unexpected lessons of life, all set to some of the most popular music and colorful lyrics yet written for the American stage!

L’Étoile

Apr. 25 & 27, 2025 // Shaver Theatre

Step into the eccentric and quirky world of this French *opéra bouffe* bursting with wit and fantastical music! When King Ouf attempts to find someone to execute for his birthday, what ensues is a rollercoaster of humor our events, mistaken identities, and comical disguises. As astrology and comedy converge to Chabrier’s effervescent and sophisticated score, let the magical world of “The Star” capture you!



Ticket Pricing Information

Single ticket pricing is listed in the calendar in the following order: **(1)** public admission, **(2)** LSU faculty/staff and seniors and **(3)** Students with ID. Listed prices do not reflect any fees. **Cash sales are not accepted. All sales are final, no refunds.**

Tickets Promotions & Subscriptions

Subscriptions offer package discounts on non-student tickets. Subscriptions may be purchased online at lsu.edu/cmda/events or by calling **225-578-3527**.

Opera Mini Subscription:

20% off regular ticket prices, 1 ticket for 2 operas.
Candide and *L'Étoile*.

Adult	Faculty/Staff/Seniors	Student
\$52	\$36	\$20

Theatre Mini Subscription:

25% off regular ticket prices, 1 ticket for 2 events.
Red Velvet and *Roleplay*.

Adult	Faculty/Staff/Seniors	Student
\$48	\$33	\$16

Venue Key

- DMCT Digital Media Center Theatre** 340 E. Parker Boulevard
- RT Reilly Theatre** 10 Tower Drive
- SOM LSU School of Music Recital Hall** 63 Infirmary Drive
- ST Shaver Theatre** 4230 Dalrymple Drive, Music & Dramatic Arts Building
- TBH Tiger Band Hall** 222 Astor Street
- TE Trinity Episcopal** 3522 Morning Glory Avenue
- UT LSU Union Theater** Tower Drive
- UP University Presbyterian** 3240 Dalrymple Drive
- UUMC University United Methodist Church** 3350 Dalrymple Drive

Venues



Shaver Theatre
In the MDA Building,
Dalrymple Drive &
Infirmary Road



School of Music Recital Hall
In the SOM Building,
Dalrymple Drive &
Infirmary Road



Reilly Theatre
Tower Drive between
Stadium Drive &
Infirmary Road



LSU Union Theater
Veterans Drive &
Highland Road

JANUARY					
24	F	String Chamber Music, LSU Faculty & Guests	7:30 p.m.	SOM	Free
25	Sa	Recital of New Music, Composition & EMDM Faculty	7:30 p.m.	SOM	Free
FEBRUARY					
2	Su	Nanci Belmont, Faculty Bassoon Recital	6:00 p.m.	SOM	Free
5	W	LSU Symphony Orchestra	7:30 p.m.	UT	\$18/\$18/\$11
6	Th	Swine Palace Presents: <i>Red Velvet</i>	7:30 p.m.	ST	Preview
7	F	Swine Palace Presents: <i>Red Velvet</i>	7:30 p.m.	ST	\$32/\$22/\$9
8	Sa	Swine Palace Presents: <i>Red Velvet</i>	7:30 p.m.	ST	\$32/\$22/\$9
9	Su	Bloch & Busoni Chamber Music for Violin & Piano	2:00 p.m.	SOM	Free
9	Su	Swine Palace Presents: <i>Red Velvet</i>	2:00 p.m.	ST	\$32/\$22/\$9
10	M	Lift Every Voice, Spirituals Concert	7:30 p.m.	SOM	Free
11	Tu	LSU Chamber Singers Concert	7:30 p.m.	TE	Free
11	Tu	LSU Woodwind Faculty Recital	7:30 p.m.	SOM	Free
12	W	Swine Palace Presents: <i>Red Velvet</i>	7:30 p.m.	ST	\$32/\$22/\$9
13	Th	Zed Saxophone Quartet, Guest Recital	5:30 p.m.	SOM	Free
13	Th	Lift Every Voice, African-American Art Songs	7:30 p.m.	SOM	Free
13	Th	Swine Palace Presents: <i>Red Velvet</i>	7:30 p.m.	ST	\$32/\$22/\$9
14	F	Swine Palace Presents: <i>Red Velvet</i>	7:30 p.m.	ST	\$32/\$22/\$9
15	Sa	Swine Palace Presents: <i>Red Velvet</i>	7:30 p.m.	ST	\$32/\$22/\$9
16	Su	Swine Palace Presents: <i>Red Velvet</i>	2:00 p.m.	ST	\$32/\$22/\$9
19	W	Charlie Goodman, Faculty Tuba Recital	7:30 p.m.	SOM	Free
20	Th	LSU Jazz Showcase featuring Adam Larson	7:30 p.m.	UT	\$18/\$18/\$11
23	Su	Grayson & Groves, Faculty Recital	2:00 p.m.	SOM	Free
25	Tu	LSU Wind Ensemble Concert	7:30 p.m.	UT	\$18/\$18/\$11
26	W	Jared Hauser (Oboe) & Willis Delony (Piano)	7:30 p.m.	SOM	Free
27	Th	LSU A Cappella Choir Concert	7:30 p.m.	UUMC	Free
MARCH					
6	Th	LSU Symphonic Winds Concert	7:30 p.m.	UT	\$18/\$18/\$11
7	F	LSU High Voltage: Adventurous Electric Guitar	7:30 p.m.	DMCT	Free
9	Su	Joana Genova (Violin) & Willis Delony (Piano)	4:00 p.m.	SOM	Free

10	M	Andrew Parker, Faculty Oboe Recital	7:30 p.m.	SOM	Free
11	Tu	LSU Symphonic Band Concert	7:30 p.m.	UT	\$18/\$18/\$11
13	Th	LSU Wind Ensemble & Chamber Winds Concert	7:30 p.m.	SOM	Free
13	Th	LSU Theatre Presents: <i>Roleplay</i>	7:30 p.m.	RT	Preview
14	F	LSU Chorale & Tiger Glee Club	7:30 p.m.	UUMC	Free
14	F	LSU Theatre Presents: <i>Roleplay</i>	7:30 p.m.	RT	\$22/\$17/\$9
15	Sa	LSU Theatre Presents: <i>Roleplay</i>	7:30 p.m.	RT	\$22/\$17/\$9
16	Su	LSU Theatre Presents: <i>Roleplay</i>	2:00 p.m.	RT	\$22/\$17/\$9
18	Tu	Plains2, Guest Recital	7:30 p.m.	SOM	Free
19	W	LSU Theatre Presents: <i>Roleplay</i>	7:30 p.m.	RT	\$22/\$17/\$9
20	Th	From the Bayou to Broadway	3:30 p.m.	SOM	Free
20	Th	LSU Chamber Symphony Concert	7:30 p.m.	SOM	Free
20	Th	LSU Theatre Presents: <i>Roleplay</i>	7:30 p.m.	RT	\$22/\$17/\$9
21	F	LSU Opera Presents: <i>Candide</i>	7:30 p.m.	ST	\$32/\$22/\$12
21	F	LSU Theatre Presents: <i>Roleplay</i>	7:30 p.m.	RT	\$22/\$17/\$9
22	Sa	LSU Theatre Presents: <i>Roleplay</i>	7:30 p.m.	RT	\$22/\$17/\$9
23	Su	LSU Theatre Presents: <i>Roleplay</i>	2:00 p.m.	RT	\$22/\$17/\$9
23	Su	LSU Opera Presents: <i>Candide</i>	3:00 p.m.	ST	\$32/\$22/\$12
23	Su	Louisiana Bass Festival	5:00 p.m.	SOM	Free
24	M	LSU Flute Studio Recital	7:30 p.m.	SOM	Free
25	Tu	LSU Chamber Singers Concert	7:30 p.m.	TE	Free
26	W	Irrera Brothers, Guest Recital	7:30 p.m.	SOM	Free
27	Th	LSU Saxophone Studio Recital	5:30 p.m.	SOM	Free
APRIL					
7	M	Baylor Piano Trio, Guest Recital	7:30 p.m.	SOM	Free
8	Tu	LSU Constantinides New Music Ensemble	7:30 p.m.	SOM	Free
10	Th	LSU Big Bands with Ryan Middagh	7:30 p.m.	UT	\$18/\$18/\$11
13	Su	LSU Clarinet Studio Recital	6:00 p.m.	SOM	Free
14	M	Undergraduate Composition Recital	5:30 p.m.	SOM	Free
15	Tu	LSU Chamber Jazz Ensemble Concert	7:30 p.m.	SOM	Free
16	W	Johannes Brahms Horn Trio, Faculty Recital	7:30 p.m.	SOM	Free

21	M	LSU Concert Orchestra	7:30 p.m.	SOM	Free
22	Tu	LSU Symphonic Band Concert	7:30 p.m.	UT	\$18/\$18/\$11
23	W	LSU Symphonic Winds Concert	7:30 p.m.	UT	\$18/\$18/\$11
24	Th	LSU Gospel Choir Concert	7:30 p.m.	SOM	Free
25	F	LSU Opera Presents: <i>L'Étoile</i>	7:30 p.m.	ST	\$32/\$22/\$12
25	F	LSU Symphony Orchestra Concert	7:30 p.m.	UT	\$18/\$18/\$11
27	Su	LSU Opera Presents: <i>L'Étoile</i>	3:00 p.m.	ST	\$32/\$22/\$12
27	Su	LSU Oboe Studio Recital	6:00 p.m.	SOM	Free
28	M	Really, Really New Music Marathon	3:00 p.m.	SOM	Free
29	Tu	LSU Wind Ensemble Concert	7:30 p.m.	UT	\$18/\$18/\$11
29	Tu	LSU Chamber Singers	7:30 p.m.	UP	Free
MAY					
2	Th	2025 Dance & Physical Theatre Showcase	7:30 p.m.	ST	\$15/\$10
2	F	LSU Festival of Choirs	7:30 p.m.	UT	\$18/\$18/\$11
4	F	2025 Dance & Physical Theatre Showcase	7:30 p.m.	ST	\$15/\$10
3	Sa	2025 Take Film Festival	7:00 p.m.	ST	\$10/Free

Box Office

Located at the performance venue and open one hour prior to the event until 30 minutes after the event begins.

Online

Visit lsu.edu/cmda/events for secure online purchasing.

In Person

Available at the performance venue. To avoid long box office lines please purchase online. No cash sales.

Contact

Call **225-578-3527** or email cmdaboxoffice@lsu.edu for more information.

Event Update

Please follow us on social media **@LSUMusic** and **@LSUTheatre** for updates and cancellations.

Connect

Sign up to receive Prologue with news and upcoming events at lsu.edu/cmda/events/guide

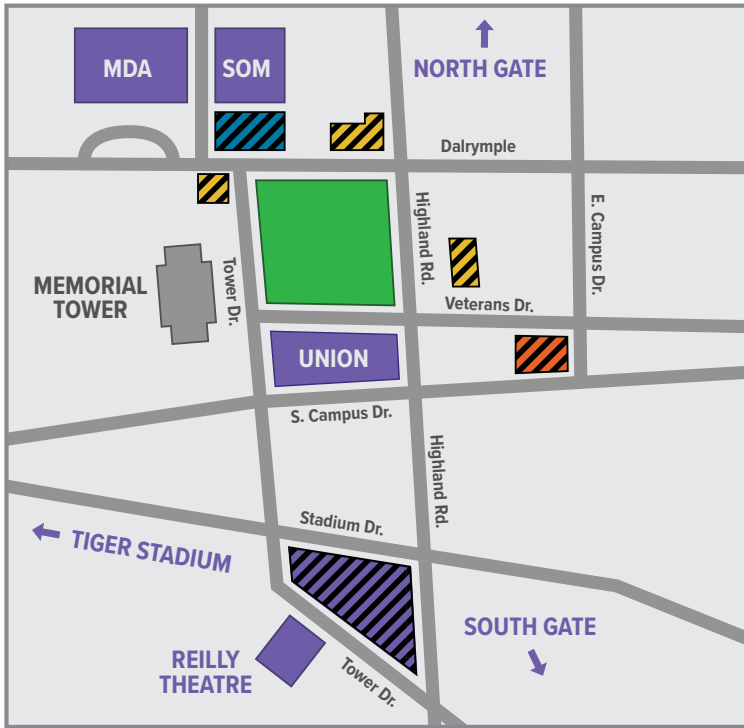
Louisiana State University

College of Music & Dramatic Arts
 General Questions: 225-578-4174
 CMDA Box Office: 225-578-3527

Parking

Parking is available in the lots surrounding the venues in the Music & Dramatic Arts Building, the School of Music, and the Reilly Theatre. The School of Music lot, Reilly Theatre lot, and street parking are free after 4:30 p.m. Metered parking is in effect until 8:00 p.m.

For events located in the LSU Union Theater, paid parking is available in the Union Square parking garage located on Highland Road.



Key

- UT – LSU Union Theater
- MDA – Music & Dramatic Arts
- SOM – School of Music

- Parking Garage
- Official Visitor Pre-Paid Parking
- SOM Parking in Pleasant Lot
- Reilly Parking in Tower Drive Lot

