

ENGAGE, EXPERIENCE, EXPLORE



2021-2022 Annual Report

LSU

Reilly Center for
Media & Public Affairs

Manship School of Mass Communication



ON THE COVER

Pictured is Josh Grimm, Ph.D., Jenée Slocum, Ph.D., Commissioner Jay Dardenne, Mia Lejeune, Lauren Crapanzano Jumonville, Sherreta Harrison, and Raymond Jetson, who all participated in our 2022 John Breaux Symposium. The symposium is one of the Reilly Center's premiere events each year. Named after United States Senator John Breaux in recognition of his dedication to pushing the boundaries of debate around an aspect of media, politics and public policy, the 2022 Symposium focused on how citizens can impact their community.

WHAT IS INSIDE?

01 Letter from Director Jenée Slocum

03 Civic Engagement

05 Events To Reflect On
Racism: Dismantling the System
Community Events

09 Research

13 Research Affiliate Highlight

15 Reilly Center Staff

17 Advisory Board Chair Highlight

19 Advisory Board

21 Event Speakers

24 Letter from Kelci Sibley

A LETTER FROM JENÉE SLOCUM, Ph.D.



Dear Reilly Center friends,

Did another year really go by? I ask myself this question at the end of each school year, both because I am a university administrator and a mother of a school-aged child—everyone in my household lives on an academic calendar. Summers are always welcome as a time to rest and reflect. There was much to reflect on from the Reilly Center’s year.

We like to do things with a bang in Louisiana, and Hurricane Ida did not mess around. She made her presence known about a week after the semester started, leaving a path of devastation throughout southeast Louisiana, knocking out electricity for over a million people (i.e., almost a quarter of the state’s population). LSU closed for eight days and some of our southern neighbors are still

working to get back to normal. Despite the pandemic and frequent water assaults, the Reilly Center and partners still managed to make great strides in ongoing projects and some new ones.

We had several “wins” last year, including the conceptualization of this annual report—the Reilly Center’s first.

Here, you will learn about

- The continuation of the Racism: Dismantling the System event series, focused on the institutional underpinnings of racial discrimination. Not only did we present, along with our amazing partners, another year of engaging and important discussions, but we also began planning for deeper engagement on research and public policy. To top things off, we presented at the Universities Studying Slavery conference, where peer institutions shared their work on reconciling with past discrimination and how to make higher education institutions places of deep reflection on equity and inclusion
- The second year of the Community Collaborative: For the Community, By the Community project—our most robust civic engagement program. Projects by our current cohort of grantees are well underway

- Three research initiatives, led by Manship School faculty. Two ensure that the experiences of Black Americans during the pandemic are amplified and documented. The third explores the importance of local news coverage in mitigating political polarization and community divisions
- The first Reilly Center in-person event since March of 2020—the 2022 John Breaux Symposium, focused on resident contributions to the common good, featuring Roger Ogden: LSU alum, former student body president, entrepreneur and philanthropist
- The 20th iteration of the Louisiana Survey, the Reilly Center’s premier public policy publication. The survey is a long-standing resource on what Louisianans think about state government and public policy issues such as taxes, social issues and infrastructure
- The Reilly Center’s Advisory Board Chair Terri Broussard Williams, an executive at Amazon and proud Manship School alumna. We added new members as well
- The addition of partners and interviews to the Louisiana Women in Politics Oral History Project

All of this takes time and effort. We rely on two full-time staff at the Reilly Center and five full-time staff at the Public Policy Research Lab. As an entity, we are mostly part-time workers, graduate assistants and intern driven. Each year, we welcome new students and congratulate others as they graduate and move on. This year, we saw two graduate students finish their studies, along with two undergraduates. We also celebrated the transition of Lauren “Lizzie” Shaw to her new position as Louisiana State University’s first woman to serve as student body president since 2007. I am thankful for our amazing staff. Please give them some hand claps, snaps and woot woots.

We’re not just doing good over here; we are ensuring that the academic world of the Manship School of Mass Communication is intertwined with other disciplines, institutions and organizations in the community.

It’s friends like you who make this work possible. Thank you for your continued support. If you know of resources we should pursue and/or would like to make a direct contribution, please connect with us.

Yours truly,
 Jenée Slocum, Ph.D.
 Director for the Reilly Center for Media & Public Affairs

CIVIC ENGAGEMENT

COMMUNITY COLLABORATIVE

By the Community, For the Community

The Community Collaborative is a community capacity building project designed to enhance Louisiana residents' ability to engage in community planning and decision making for the betterment of local well being. Greater capacity ensures community members are able to assess needs, identify solutions and utilize resources to address local challenges. Participants identify community needs and submit grant applications aimed at implementing public projects in Louisiana. Four grant applicants move to the next phase of engagement and are provided \$5,000 to implement their project. The 2022 recipients include:

- The Yellow Brick Academy is a training program for Black women in business. It relays skills for small business owners while also addressing healthy physical and mental living habits
- The North Baton Rouge Culinary and Hospitality Workforce program trains at-risk, young adults ages 16 to 24 with the goal of teaching culinary skills that will make them valuable in the food industry
- New Orleans East Matters "Love The Boot" Beautification Initiative in Joe W. Brown Park provides landscaping improvements in a region of the city that is still recovering from the effects of Hurricane Katrina, providing a greenspace for residents
- The Lincoln Beach Project aims to develop a revitalization plan for a formerly segregated beach that has fallen into disrepair, but could be a natural refuge for the New Orleans East community

PUBLIC POLICY FELLOW PROGRAM



The Public Policy Fellows program is central to the Reilly Center's mission to evaluate our level of public discourse and generate dialogue about new ideas and information. The 2021-2022 Public Policy Fellow is Katie Knobloch, Ph.D., an associate professor in the Department of Communication Studies and the associate director of the Center for Public Deliberation at Colorado State University. She is also a two-time Manship School alumna. Her teaching and research focuses on public participation and deliberative democracy, particularly the design and impact of community engagement programs. The Reilly Center engaged Knobloch to develop the Community Collaborative: By the Community, For the Community program in 2021, and assist with refining the program in 2022. Along with Reilly Center staff, she developed a how-to guide on community engagement and training workbook that can be utilized beyond this project.

Katie Knobloch, Ph.D., 2021-2022 Public Policy Fellow

2022 JOHN BREAUX SYMPOSIUM



The 2022 John Breaux Symposium focused on the many ways citizens contribute to the common good and featured messages from Lamar Advertising CEO and former Louisiana State Representative Sean Reilly; and East Baton Rouge Parish Mayor-President Sharon Weston Broome. The keynote speaker was former LSU student body president, successful real estate businessman and long-time LSU benefactor Roger Ogden. Through the lens of elected officials, civic leaders and philanthropists, guests discussed how individuals contribute to the collective community. Change starts within our communities by individuals who have the passion and commitment to mobilize. Additionally, there was a panel conversation with local civic leaders and presentations from the inaugural grantees of The Community Collaborative: By the Community, For the Community.

Morgan Washington (2021 Community Collaborative Grantee)

LOUISIANA SURVEY

The 2022 Louisiana Survey is the 20th iteration of an annual series of state-wide public opinion surveys sponsored by the Reilly Center. The mission of the Louisiana Survey is to establish benchmarks, as well as to capture changes in residents' assessments of state government services.

The survey contains core questions designed to serve as barometers of public sentiment, including assessments of whether the state is heading in the right direction or wrong direction. The survey also asks about contemporary policy issues. The 2022 survey contained items on the COVID-19 pandemic, coastal issues, natural disasters, election integrity, media use and abortion. The research team solicits topics from members of the policy community representing a broad political spectrum. The 2022 survey revealed growing pessimism about the direction of the state, significant concern about flooding and natural disasters, declining trust in local news, and rising partisan polarization in views about Covid response, election integrity and abortion. The survey was facilitated by Michael Henderson, Ph.D., as lead researcher, along with Jenée Slocum, Ph.D., as researcher and editor.



EVENTS TO REFLECT ON

RACISM: DISMANTLING THE SYSTEM

In 2020, the Reilly Center launched the Racism: Dismantling the System series, in partnership with Southern University and A&M College's Nelson Mandela College of Government and Social Sciences, Louisiana Budget Project, NAACP Louisiana State Conference and the LSU Office of Diversity & Inclusion. The series features conversations about systemic racism and solution-based action contributing to equal opportunity and justice in our communities. The series amplifies the voices of advocates, academics, journalists and more working for social justice in our communities and nation.

Racism: Dismantling the System | A Timeline of Progress

Given the success of the series, the partners submitted a panel proposal to the Universities Studying Slavery Symposium hosted in Winston-Salem and Greensboro, North Carolina. The panel presentation brought together members of the organizing committee to discuss efforts to unpack the enduring effects of slavery in the U.S. and their collective vision for the future of the series. The presentation was hosted as part of a three-day conference highlighting the work of universities across the nation committed to creating a more equitable society.

Anti-AAPI Racism and Its Effects

Asian American Pacific Islander communities have faced many trials due to systemic racism from exclusionary immigration policies to a rise in hate crimes as a result of misinformation about the COVID-19 pandemic. Activists, academics and journalists explored this complex history and how Asians and Pacific Islanders built thriving communities that are integral to the fabric of the United States.

The Great Equalizer? How Policy Cemented Education Inequity

The longstanding effects of the ruling in Plessy v. Ferguson filtered into every aspect of our society, including the education system. A. P. Tureaud, Jr., LSU's first enrolled Black student, and education experts discussed the "separate but equal" doctrine's role in cementing education inequity, along with the misrepresentation of education as the great equalizer.

Separate and Unequal: The Legacy of Plessy v. Ferguson

Over 125 years after the United States Supreme Court ruled in the landmark Plessy v. Ferguson case, we still experience the lingering results of a system built to segregate. The panel, featuring descendants of Homer Plessy and Judge John H. Ferguson, historians, journalists and legal experts, discussed the case's role in undergirding systems and structures we are working to dismantle.

The Role of Social Injustice in Mental Health Inequity

Inspired by panelist Dr. Ruth Shim's article, the season three finale explored the relationship between the mental health system in the United States and the impacts of social injustices on access to resources, opportunities and basic protections for the Black, Indigenous and People of Color (BIPOC) community. Shim and fellow mental health experts explored the impact of structural racism on access to mental healthcare in communities of color.


Activism Across Generations: The Fight for Civil Rights Then and Now


Throughout history, the social justice movement has had many looks. From the earliest days of the Civil Rights Movement to Black Lives Matter, youth have played prominent roles. But what are the differences in generational approach? This event looked at the legacies of past mobilizations and the differences and similarities of current ones.


**RACISM:
DISMANTLING
THE SYSTEM**

Activism Across Generations: The
Fight for Civil Rights Then & Now
January 18, 2022

LSU | Manship School of
Mass Communication
Reilly Center for Media & Public Affairs

 Nelson Mandela College of
Government and Social Sciences

 Louisiana Budget Project

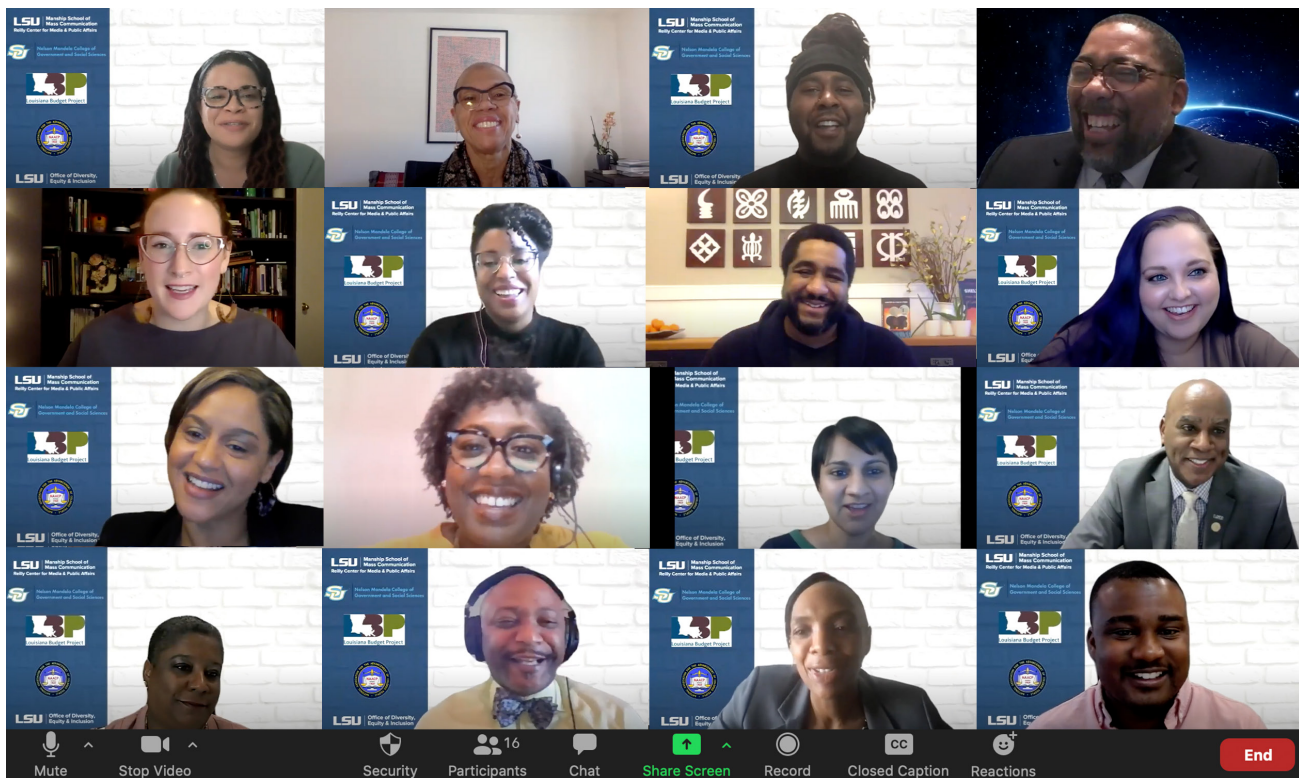
 LSU | Office of Diversity,
Equity & Inclusion

Is the Customer Always Right? Discrimination Experienced by BIPOC Customers

In a time when calls for racial justice have led to major national and global brands making statements about the importance of diversity, equity and inclusion, how can businesses protect BIPOC consumers when they face discrimination from fellow consumers? This discussion explored the ways businesses deal with instances of racism and discrimination.

The Fight for Environmental Equity

The most vulnerable and marginalized communities live, work and play in geographical locations affected by pollution and climate change. This is not a coincidence. From the Flint, Michigan water crisis to Louisiana’s own “Cancer Alley,” neglect and ineffective environmental regulations place the greatest environmental burdens on poor and minority communities. Experts and activists examined the historical contributions to current environmental conditions, as well as policies that better support clean, healthy communities for all.



This snapshot encompasses our Racism: Dismantling the System series. During COVID-19, many of our events took place over Zoom, but this photo highlights how our community was still able to come together to celebrate and learn.

COMMUNITY EVENTS



Stories of Statesmanship: Nine to Fives and Limelight Lives

Every two to four years, the public is given the chance to make long-lasting changes to the way we are governed. During this event, panelists envisioned and discussed who these change bringers are and their lives after politics. The panelists were able to explore the intricacies of choosing to run for office with a non-traditional background, or deciding to step aside after a career in the political spotlight.

Supporting Survivors: The Role of Media and Technology

In this roundtable discussion inspired by lead investigator Manship School Assistant Professor Fanny Ramirez's research, rapidly changing pandemic conditions forced domestic and sexual violence support organizations that typically rely on in-person communications to shift their outreach efforts and services to a mostly virtual format. Policy experts, scholars and practitioners discussed the role of media and technology as a tool in pandemic and non-pandemic times. Panelists explored media coverage, the creation of awareness campaigns, legal protections and challenges, and technology as both an ally and foe.

Common Ground: Local News & Political Coverage

In an effort to understand how coverage of national political conversations have impacted civility and common ground politics at the local level, Associate Professor Josh Darr embarked on a project to analyze what happened when newsrooms shift coverage of politics from the national lens to solely local issues. This discussion explored new perspectives on the value of local news in communities and politics, and possible paths forward for the local news industry in uncertain times.



20 Years Later: Lessons From Reporting on September 11, 2001

As the world watched, reporters and photographers captured the multitude of images and stories of the worst terrorist act committed on American soil. Twenty years later, the Reilly Center hosted a commemorative panel to bring together photojournalists interviewed in Manship School Associate Professor Judith Sylvester's book "Women Journalists at Ground Zero." The panel explored their experiences and the ways journalism has evolved since 9/11.

RESEARCH

LAMAR VISITING SCHOLARS

Charlie and Carole Lamar are the founders and sponsors of the Lamar Visiting Scholars Program. The program promotes media and public affairs research and creative activity benefitting the Manship School, LSU community, alumni and beyond. Lamar Visiting Scholars are also Reilly Center Research Affiliates. Sherella Cupid, Ph.D., is the 2021-2022 Lamar Visiting Scholar.



SHERELLA CUPID, Ph.D.



Sherella Cupid, Ph.D., is an interdisciplinary research-practitioner and educator from the Baltimore metropolitan area. Her research centers on the experience of Black women and girls in education, with a focus on Black doctoral and faculty women, sister circles, mentorship, and Black feminism and womanism. Currently, she is creating digital sister circles, via her podcast, *Lirae Journey* and *Sista Docs Exhale*, and other emerging projects. She holds a doctorate in language, literacy, and culture from the University of Maryland, Baltimore County, an M. Ed. with a specialization in at-risk and diverse learners from Goucher College, and a B.A. in international area studies, with a minor in Africana studies from Drexel University. Cupid's Lamar Visiting Scholar project, "Investigating Sister Circles in Medical and Health Professions During the Pandemic," focuses on the experiences of Black women working

in healthcare and whether sister circles—support groups for Black women—helped them navigate the challenges they faced professionally. Further, through an intersectional lens, this research highlights how race, gender and health impact the professional careers and wellness of participants. Cupid employs a national survey to understand sister circle experiences, along with focus groups. This format helps to document the everyday experiences of often understudied groups.

PUBLIC POLICY RESEARCH LAB

Louisiana State University's Public Policy Research Lab (PPRL) is dedicated to high quality, state-of-the-art data collection and analysis. Primarily known for phone survey work, PPRL also conducts mail and web surveys. For more than 15 years, the lab has advanced both practical and scholarly research while playing a leadership role in public policy development at the state and national level. The lab works on several large national projects such as the Behavioral Risk Factor Surveillance System Survey funded, in part, by the Centers for Disease Control and Prevention, as well as the national Pregnancy Risk Assessment Monitoring System survey. In addition to large, national surveys, the PPRL provides services to the business community, scholars, nonprofits and more. This year, Michael Climek, the long time operational manager became the director and Associate Professor Michael Henderson, the former director, will continue on with the Louisiana Survey and other Reilly Center work.

LSU PRESS MEDIA & PUBLIC AFFAIRS BOOK SERIES

"The Disinformers: Disinformation, Social Media and Elections," edited by Professor Lance Porter, is anticipated in the fall of 2023 through the LSU Press' Media & Public Affairs book series. Stemming from the 2020 John Breaux Symposium, Hacking Democracy: Technology, the Internet & Politics, the central discussion in the book is the use of social media to dispense false information, media skepticism and election system distrust. Chapter contributors offer an in-depth analysis of the use of media in elections and the spread of misinformation. Books in the series explore the complex relationship between knowledge and power in American democracy by examining what citizens and public officials know, where they get their information, how they use that information to act, and the differences that information makes within our government and society.



RESEARCH

LOUISIANA WOMEN IN POLITICS ORAL HISTORY PROJECT

PRESERVING THE PAST & INSPIRING THE FUTURE

The Reilly Center, in partnership with universities across the state including The Waggoner Center at Louisiana Tech University, Kathleen Babineaux Blanco Public Policy Center at the University of Louisiana at Lafayette, the Department of History at Xavier University of Louisiana, and the LSU T. Harry Williams Center for Oral History, is spearheading an effort to document and preserve the legacies of women pioneers in Louisiana's political sphere. Recording women's first hand perspectives not only provides a historical record from important public figures on some of Louisiana's most notable chapters, but also their career reflections and how they navigated governing and legislating in sometimes unwelcoming territory. Their inspirational stories will serve as a resource for both scholars and future generations of women considering careers in politics. The past year has offered an opportunity to return to in-person interviews. In 2021-2022, the Reilly Center and partners across the state have documented the stories of Louisiana State Representatives Tammy Phelps, Julie Emerson, Kay Kellogg Katz, Barbara Norton and Simone Champagne.



THE INSPIRATION



Former Governor Kathleen Babineaux Blanco's captivating video interview for the Reilly Center's 2019 John Breaux Symposium, "Politicking While Female: The Political Life of Women," documented her decades-long experience as an elected official and the only woman to hold the highest office in Louisiana. Underlying her informative accounts of pivotal moments for the state and for female leaders was the understanding that we would not have many more opportunities to hear from her. This realization was the catalyst for this endeavor. The project honors the legacies of women who have served in elected office and provides a resource to access their wisdom, knowledge and experiences.

REILLY CENTER RESEARCH AFFILIATE - ASHA WINFIELD, PH.D. - THE STORYTELLERS LAB

The Storytellers Lab is a research and filmmaking group under the direction of Manship School Assistant Professor Asha Winfield. The storytellers are made up of academics, community members, leaders, students and friends who use qualitative methods to shed light on identity, culture and society through diverse perspectives and stories. Much like our journalist friends, this initiative is focused on centering community stories. By using many different qualitative and visual methods of storytelling including oral histories, life stories and neighborhood folklore, listeners are able to gain a better understanding of our global and diverse world. As a 2021-2022 Reilly Center research affiliate, Winfield utilized a mini-grant from the center to complete a documentary on Black COVID-19 stories. This is the first in a planned series of annual documentaries from The Storytellers Lab. As part of this grant, Winfield will undertake community events sharing the art of storytelling and mechanics of technology to capture those stories for generations to come.



Winfield is able to capture generations of stories through panels that feature Black voices, along with creating a visual aspect that represents these marginalized groups.

2021-2022 REILLY CENTER RESEARCH AFFILIATE - JOSH DARR, PH.D.

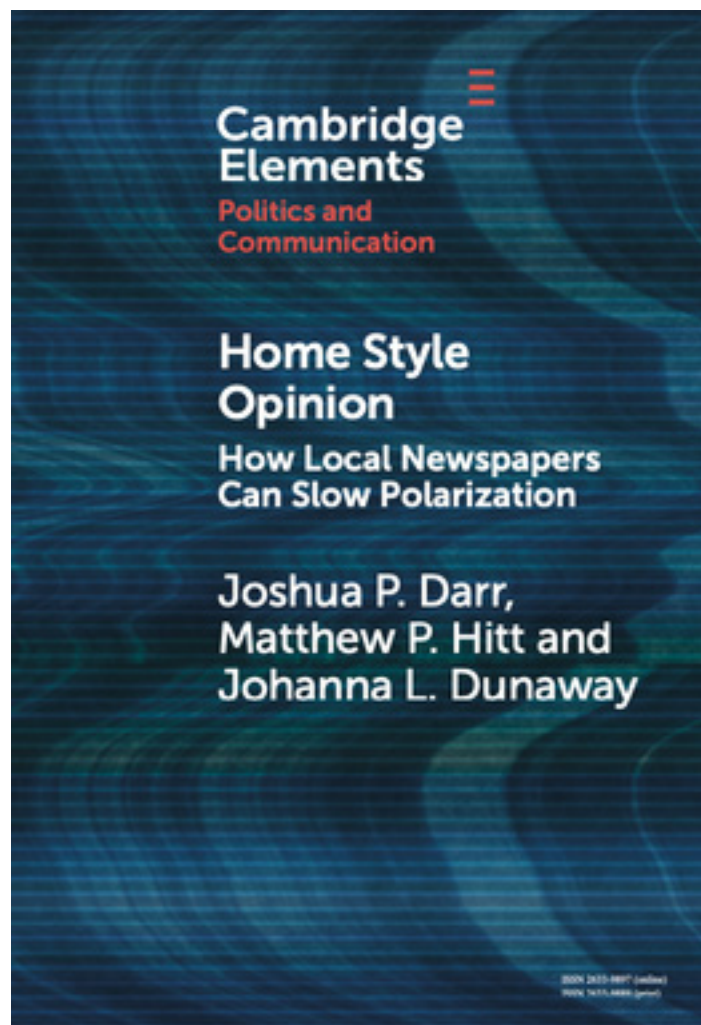


Utilizing a Reilly Center mini-grant, Joshua Darr, an associate professor, associate dean for research and strategic initiatives and Reilly Center research affiliate, continued an exploration with partners Trusting News and several newsrooms across the country. The project looks at strengthening trust across the political spectrum. Darr leads a study with five newsrooms that log the headlines of wire stories and make edits to reduce polarizing content in those headlines. The Reilly Center grant enabled access to specialized software and services contributing to an analysis where several factors about a survey item are varied simultaneously. This allows for an understanding of how much each individual

factor contributes to respondents' willingness to choose a particular headline. These survey experiments test how American news consumers respond to the original headlines compared to the edited headlines, with the goal of providing guidance to newsrooms on wire story editing strategies.

As funding in newsrooms continues to decline and there are fewer local news sources, Darr argues this loss contributes to further political polarization as readers turn to national news sources which emphasize division among parties. Darr's previous research demonstrated that local newspaper closures increased polarization and in the book, "Home Style Opinion: How Local Newspapers Can Slow Polarization," Darr and coauthors demonstrated that when local papers dropped national politics from the opinion page, polarization decreased in communities. Most importantly, when local newspapers focus on local matters, they build cohesion and a sense of community.

Darr holds a Ph.D. and master's of political science from the University of Pennsylvania and a bachelor's degree from Boston College. In 2022, he was named a Carnegie Fellow by the Andrew Carnegie Corporation of New York. His research focuses on campaign strategy, political knowledge, partisan polarization and local news.



REILLY CENTER STAFF



JENÉE SLOCUM, Ph.D.
DIRECTOR



KELCI SIBLEY
PROGRAM COORDINATOR



CHRISTINE GRAHAM
PPRL SUBMISSIONS
SPECIALIST



GAIL HAGAN
PPRL HEAD SUPERVISOR



CINDY WILLIAMSON
PPRL HEAD TRAINER



MADI BANKS



LILLIANA
BARAHONA



TAYLOR BARNET



ANA BLOCK



DYLAN BOREL



LAURYN BOWMAN



ADAMARIS
CHAVEZ



MARIANA
FONTAÑA



MURRY
GOLDBERG



JULIA GOVENDER



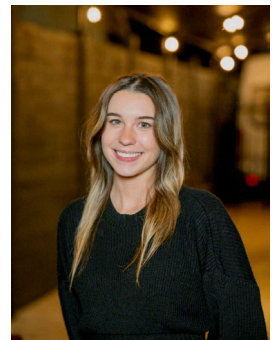
SOHEIL
KAFILVEYJUYEH



MILLIE LINDSAY



LIZZIE SHAW



NORA SCOTT



**TERRI BROUSSARD
WILLIAMS
ADVISORY BOARD CHAIR**

Terri Broussard Williams, the inaugural Reilly Center advisory board chair, is currently the head of social justice policy and partnerships at Amazon. She is also a Manship School alumna. For the past two years, she has directed her enthusiasm and passion for the Reilly Center work to guiding the development of the advisory board and expanding its footprint.

She brings her courageous, authentic self to making positive change for millions in each of her professional and volunteer roles. Her most distinguished accomplishments include the passage of key pieces of legislation, such as The Louisiana Smoke-Free Air Act. She is also the founder of the Movement Maker platform, where she highlights those leading social movements for good and continues to provide for her community. Terri graduated from the University of Pennsylvania with a Master of nonprofit leadership. She is also a graduate of the Social Impact Strategy Executive Education program at the University of Pennsylvania and a graduate certificate holder in diversity and inclusion from Cornell University.



Terri's book, "Find Your Fire," features stories from influential changemakers who are making a difference. Further, "Find Your Fire" teaches you how to become a changemaker and be successful in social movements.

ADVISORY BOARD

The Reilly Center Advisory Board is a collective of thought leaders in media, public affairs, business and academia who support and counsel the Center in its mission to make positive change in the world. Established in 2020-2021, the board continued to grow during the 2021-2022 academic year and named its first chair, Terri Broussard Williams.



TERRI BROUSSARD WILLIAMS (CHAIR)
Head of Social Justice Policy & Partnerships, Public Policy, Amazon



JESSICA BREAUX
Economic Development Manager, Amazon



JOHANNA DUNAWAY, Ph.D.
Associate Professor in the Department of Political Science, Texas A&M University



EDMUND J. GIERING IV
General Counsel, Baton Rouge Area Foundation



STEWART JEFFRIES
President, Jeffries Strategies, LLC



SARA JUDSON
President & CEO, Community Foundation of Southwest Louisiana



JARED LLORENS, Ph.D.
Dean, LSU E.J. Ourso College of Business



PASHA MOORE
Founder & Principal, Holland Taucher Consulting



SAUL NEWSOME

Founder & Managing
Partner, Newsome
International Law, LLC



**MARKEY PIERRE,
Ph.D.**

Vice Chancellor of
External Affairs &
Chief of Staff, LSU
Health Sciences -
Shreveport



MENDI ROBINSON

Vice President of
Creative, Lamar
Advertising



JOHN SNOW

Partner, Emergent
Method



LAURA VINSANT

Executive Director,
Teach for America,
South Louisiana



ALLIE YOUNG

Protect the Sacred,
Manager & Founder



**JOSH GRIMM,
Ph.D.**

Interim Dean, Manship
School of Mass
Communication, Ex
Officio



**JENEÉ SOLCUM
Ph.D.**

Director, Reilly Center
for Media & Public
Affairs, Ex Officio

SPEAKERS & PRESENTERS

FALL 2021

Supporting Survivors: The Role of Media and Technology

Marcia Harris Burden, Esq.	Board President, The Butterfly Society
Cory Alford, Esq.	Staff Attorney, Louisiana Coalition Against Domestic Violence
Wanjennia Atkins	Legal Assistant, Louisiana Department of Justice
Sarah Carpenter	Ph.D. Candidate, LSU Manship School of Mass Communication
Fanny Ramirez, Ph.D.	Assistant Professor, LSU Manship School of Mass Communication

Stories of Statesmanship: Nine to Fives and Limelight Lives

Ana Block	Graduate student, MPA Program, E.J. Ourso College of Business, LSU
Trey Greyson	Former Kentucky Secretary of State
Julie Stokes	Former Louisiana State Representative

Anti-AAPI Racism and Its Effects

Keva X. Bui, Ph.D.	President's Postdoctoral Fellow, Global Asias Initiative, The Pennsylvania State
Priyanka Bhatt	Senior Staff Attorney, Project South
Natasha Chen Christensen, Ph.D.	Associate Professor of Sociology, Monroe Community College
Liz Koh	Morning Anchor, WAFB-TV
Eunice Kim	Program Manager, Stop AAPI Hate
Sherry Liang	Journalist, Screenwriter, Filmmaker & Former Editor-in-Chief of The Red & Black
Craig Santos Perez, Ph.D.	Professor in the English Department, University of Hawai'i, Manoa

The Great Equalizer? How Policy Cemented Educational Inequity

Erica Frankenberg, Ph.D.	Director of the Center of Education and Civil Rights, The Pennsylvania State University
Xavier Kent	LSU Student, NAACP Youth and College Division President
Albert Samuels, Ph.D.	Chair of the Department of Political Science & History, Southern University and A&M College
A.P. Tureaud, Jr.	Board Member, Plessy & Ferguson Foundation

Seperate and Unequal: The Legacy of Plessy v. Ferguson

Angela Allen-Bell	Associate Professor, Southern University Law Center
Brian J. Costello, O. de M. III	Tertiary, Historian, Genealogist and Author
Phoebe Ferguson	Executive Director, Plessy & Ferguson Foundation
Keith M. Plessy	President, Plessy & Ferguson Foundation
Albert Samuels, Ph.D.	Chair of Department of Political Science & History, Southern University and A&M College
Mary Smith	Political Science Senior, Southern University and A&M College

The Role of Social Injustice in Mental Health Inequity

Shelina Davis, MPH, MSW	CEO, Louisiana Public Health Institute
Dr. Lucy Ogbu-Nwobodo, MS	MAS, PGY-4, MGH/McLean Psychiatry Residency
Dr. Ruth Shim, MPH	Associate Dean of Diverse and Inclusive Education, Luke & Grace Kim Professor in Cultural Psychiatry, University of California, Davis School of Medicine

SPRING 2022

20 Years Later: Lessons From Reporting on September 11, 2001

Beth Fertig	XQ Institute Senior Editor for Education, Former Reporter, WNYC Public Reporter
Suzanne Huffman, Ph.D.	Professor Emerita of Journalism, Texas Christian University, Co-Author "Women Journalists at Ground Zero"
Emily Longnecker	Reporter, 13News, WTHR
Gulnara Samoilova	Photographer, Author, Founder of Women Street Photographers
Judith Sylvester, Ph.D.	Associate Professor, LSU, Co-Author "Women Journalists at Ground Zero"

Common Ground: Local News & Political Coverage

Sarabeth Berman	CEO, American Journalism Project
Joshua Darr, Ph.D.	Associate Professor, LSU Manship School of Mass Communication
Dan Kennedy	Professor, School of Journalism, Northeastern University
Jessica Mahone, Ph.D.	Research Director, Center for Innovation & Sustainability in Local Media, UNC, Hussman School of Journalism & Media
Steve Waldman	President and Co-Founder, Report for America

John Breaux Symposium

Reginald Brown	Gardere Proud grantee
Carol Chin	Natchez Pecan Park Basketball grantee
Jay Dardenne	Commissioner of Administration, State of Louisiana
Liam Doyle	Project Enable grantee
Murelle Harrison, Ph.D.	Gardere Proud grantee
Sherreta Harrison	Sustainability Catalyst, MetroMorphosis, 2022 AARP Purpose Prize Winner
Raymond Jetson	Chief Executive Catalyst, MetroMorphosis
Lauren Crapanzano Jumonville	Director, Civic Leadership Initiatives, Baton Rouge Area Foundation
Mia LeJeune	LSU Manship School of Mass Communication Graduate, Moderator
Roger Ogden	New Orleans Real Estate Developer, Civic Leader and Philanthropist
Kathleen Stewart Richey	Give a Child a Chance grantee, Executive Director, Louisiana CASA Association
Morgan Washington	Give a Child a Chance grantee, Director of Community Outreach, Louisiana CASA Association

Activism Across Generations: The Fight for Civil Rights Then and Now

Christin 'Cici' Battle	Activist, Speaker & Former Executive Director of Young People For
Tristan Cabello, Ph.D.	Associate Director of the Masters of Liberal Arts, Johns Hopkins University
Zackory Kirk, Ph.D.	Social Activist, Content Creator & Author
Sara Mora	Storyteller, Speaker, Digital Strategist, Activist & Founder of Population MIC
Kennedi Smith	Co-Founder of Black Women Graduate Collective, Junior Media Specialist, DAA Media+Marketing, Manship School graduate student

SPEAKERS & PRESENTERS

SPRING 2022

Is the Customer Always Right? Discrimination Experienced by BIPOC Consumers

Alexander Camardelle, Ph.D.	Director of Workforce Policy, Joint Center for Political & Economic Studies
Cassi Pittman Claytor, Ph.D.	Climo Junior Professor of Sociology; Acting Co-Director of African & African American Studies Minor, Case Western Reserve University
Elsa Dimitriadis	Chief Impact Strategist, Conversation Starters
Davante Lewis	Director of Public Affairs and Outreach, Louisiana Budget Project
Traci Parker, Ph.D.	Associate Professor and Graduate Program Director, W.E.B. Du Bois Department of Afro-American Studies, University of Massachusetts Amherst

The Fight for Environmental Equity

Denise Abdul-Rahman	Special Program Manager, The Chisholm Legacy Project & Environmental Climate Justice Program Chair, Indiana State Conference of the NAACP
Timothy W. Hardy	Partner, Breazeale, Sachse & Wilson, L.L.P.
Isaias Hernandez	Environmental Educator & Founder of QueerBrownVegan
Charles Lee	Senior Policy Advisor, EPA Office of Environmental Justice
Charity C. Williams	Legal Secretary, Sidley Austin, L.L.P., Former Vice President, LSU National Association of Black Journalists



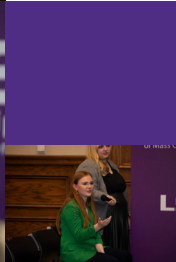


Kelci Sibley, Program Coordinator

The 2021-2022 academic year was jampacked with a broad array of programming from the continuation of the Racism: Dismantling the System series to events highlighting Manship School faculty's research and expertise. As program coordinator, I endeavor to produce content that can reach not just our students but the wider LSU and Baton Rouge community. We spent much of the 2021 summer executing a rebrand of the Racism: Dismantling the System series through the successful #ActNow campaign. In addition to the series, we welcomed our first in-person event in two years with the 2022 John Breaux Symposium: Civic Engagement for the Common Good, hosted in honor of DeeDee Reilly. As we look to the future of the center's programming, I'm excited to continue producing events that are impactful, engaging and experience-driven. I'd also like to acknowledge that the success of our programming comes down to the people behind the scenes. Our team of graduate students and interns are some of the best I have had the privilege of working with. Finally, keep up with all our upcoming events by following us on Instagram, Twitter, Facebook, LinkedIn, TikTok and at the Reilly Center's website. I look forward to seeing you all at a Reilly Center program soon.



LSU | Reilly Center for
Media & Public Affairs
Manship School of Mass Communication



LSU

Reilly Center for Media & Public Affairs

Manship School of Mass Communication



144 Field House Drive, Baton Rouge, LA 70803

www.lsureillycenter.com |    